

Write your name here

Surname

Other names

Pearson
Edexcel GCSE

Centre Number

--	--	--	--	--	--

Candidate Number

--	--	--	--	--	--

Geography B

Unit 2: People and the Planet

Higher Tier

Thursday 22 May 2014 – Morning
Time: 1 hour 15 minutes

Paper Reference
5GB2H/01

You do not need any other materials.

Total Marks

Instructions

- Use **black** ink or ball-point pen.
- **Fill in the boxes** at the top of this page with your name, centre number and candidate number.
- In Section A, answer **all** questions.
- In Section B, answer **either** question 5 **or** 6.
- In Section C, answer **either** question 7 **or** 8.
- Answer the questions in the spaces provided
– *there may be more space than you need.*

Information

- The total mark for this paper is 78.
- The marks for **each** question are shown in brackets
– *use this as a guide as to how much time to spend on each question.*
- Questions labelled with an **asterisk** (*) are ones where the quality of your written communication will be assessed
– *you should take particular care on these questions with your spelling, punctuation and grammar, as well as the clarity of expression.*
- The marks available for spelling, punctuation and grammar are clearly indicated.

Advice

- Read each question carefully before you start to answer it.
- Check your answers if you have time at the end.

Turn over ►

P43079A

©2014 Pearson Education Ltd.

5/4/5/4



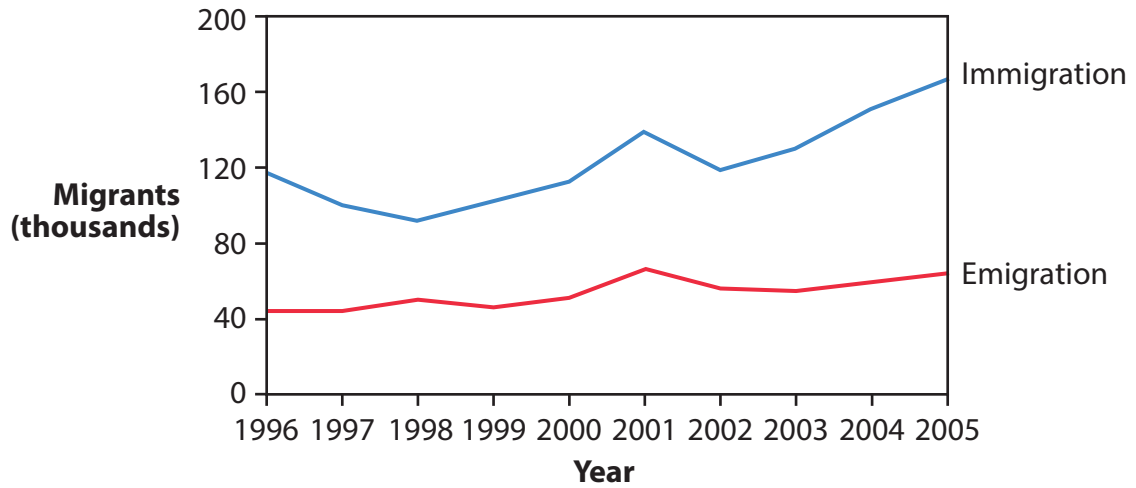
PEARSON

SECTION A – INTRODUCTION TO PEOPLE AND THE PLANET

Answer ALL questions in this section.

Topic 1: Population Dynamics

1 Figure 1 shows migration to and from Australia, 1996–2005.



(Source: © Peter Stalker (www.pstalker.com))

Figure 1

(a) Study Figure 1.

Outline **two** differences between migration to and from Australia.

(2)

1

2



(b) For a named developing country, explain its population **structure**.

You may draw a diagram to help your answer.

(4)

Named developing country



.....

.....

.....

.....

.....

.....

.....

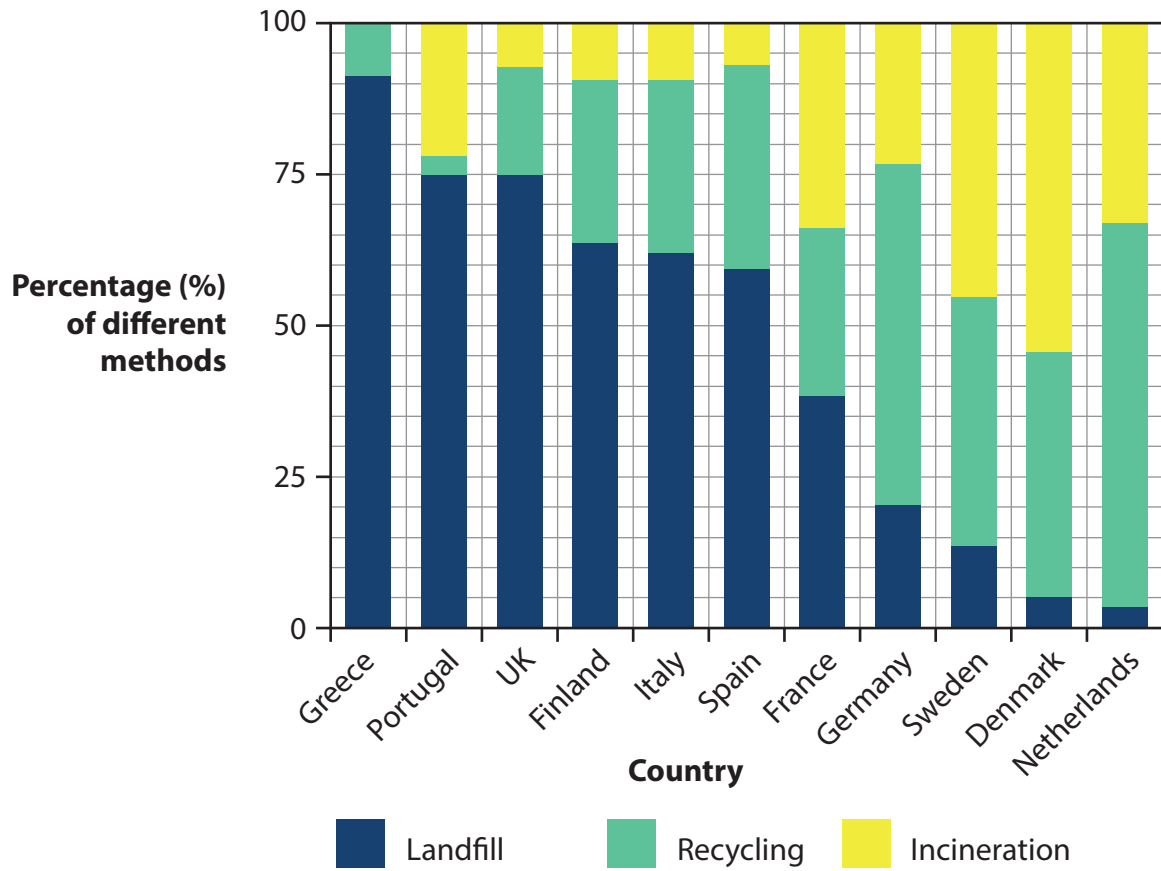
.....

.....



Topic 2: Consuming Resources

2 Figure 2 shows methods of waste disposal in selected European countries.



(Source: This information is licensed under the terms of the Open Government Licence [<http://www.nationalarchives.gov.uk/doc/open-government-licence/version/2/>])

Figure 2

(a) Study Figure 2.

Describe the variations in the percentage of waste that is recycled in different countries.

(2)

.....

.....

.....

.....



(b) For a named **non-renewable** resource, explain why consumption varies from place to place.

(4)

Named non-renewable resource

.....

.....

.....

.....

.....

.....

.....

.....

.....



Topic 3: Globalisation

3 Figure 3 shows changes in the value of international trade between 2005 and 2013.

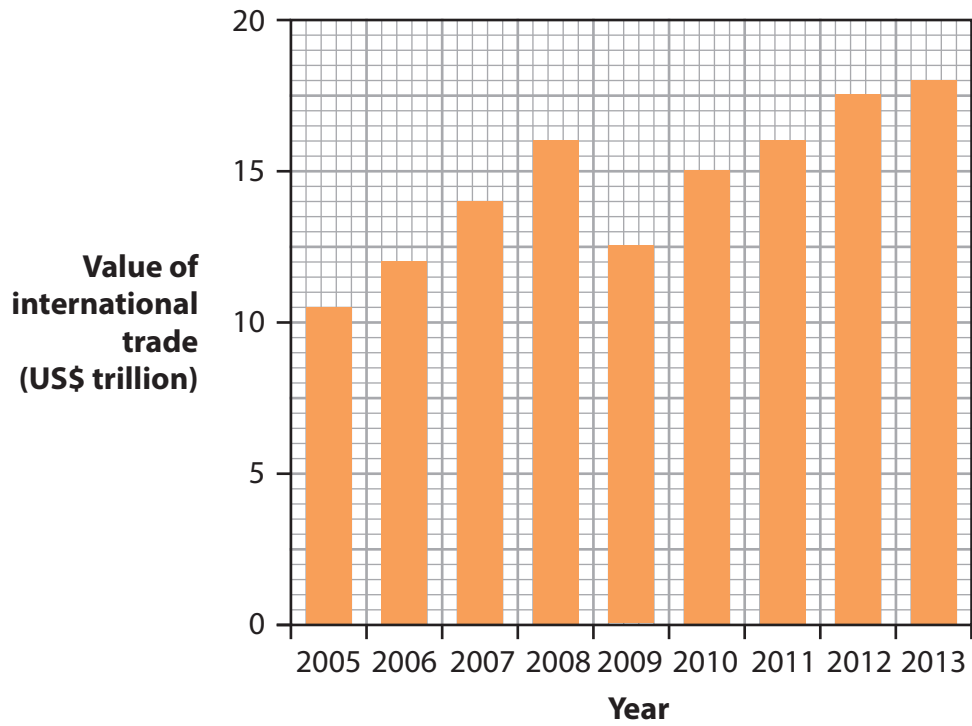


Figure 3

(a) Study Figure 3.

Describe the changes in international trade between 2005 and 2013.

(2)

.....

.....

.....

.....



(b) For a named transnational corporation (TNC), explain how it operates in different parts of the world.

(4)

Named TNC

.....

.....

.....

.....

.....

.....

.....

.....

.....

.....



Topic 4: Development Dilemmas

4 Figure 4 shows the location of the 48 Least Developed Countries.

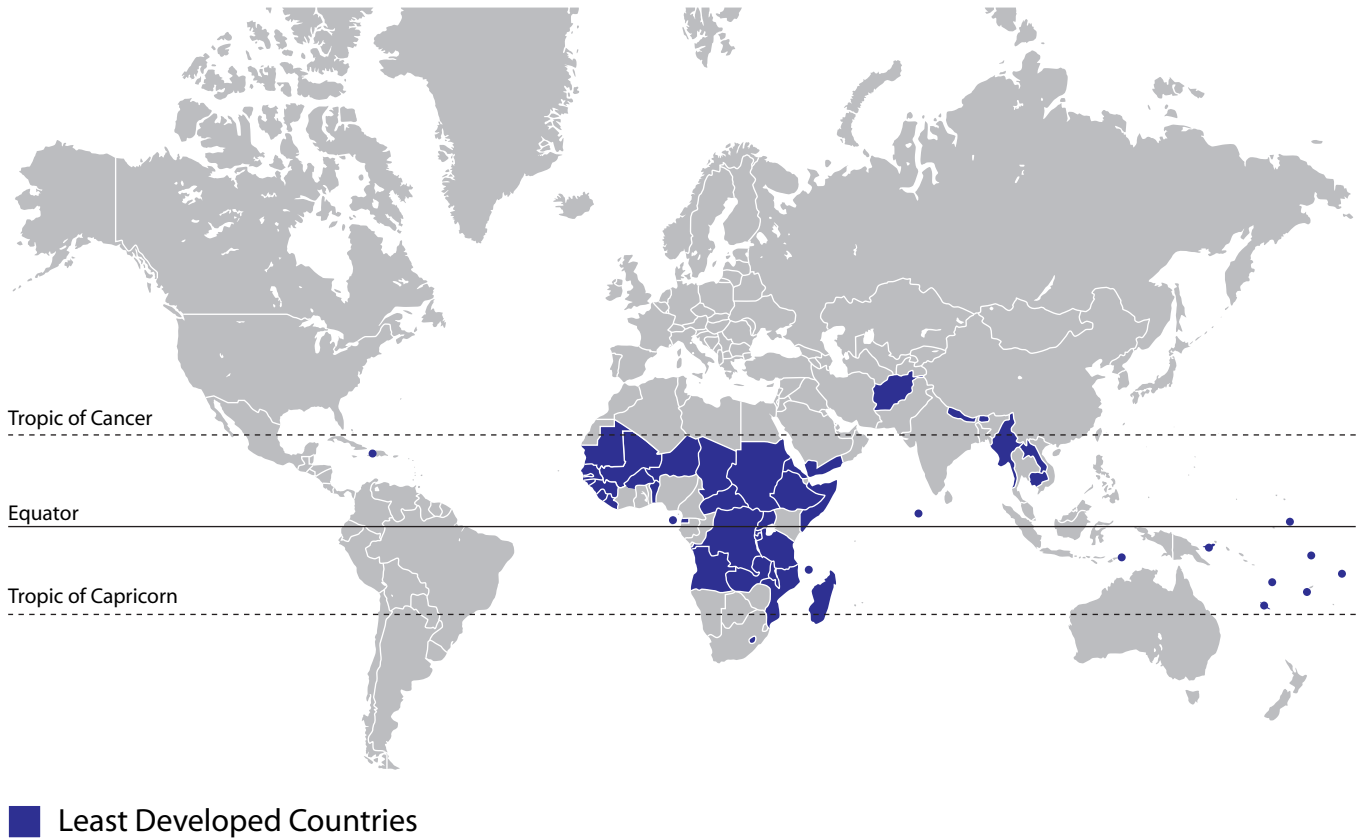


Figure 4

(a) Study Figure 4.

Describe the distribution of the Least Developed Countries.

(2)

.....

.....

.....

.....



(b) For a named developing country in Sub-Saharan Africa, describe its recent economic development.

(4)

Named country

.....

.....

.....

.....

.....

.....

.....

.....

.....



SECTION B – SMALL-SCALE PEOPLE AND THE PLANET

Answer ONE question in this section.

Topic 5: The Changing Economy of the UK

If you answer Question 5 put a cross in the box .

Spelling, punctuation and grammar will be assessed in 5*(b).

- 5** Figure 5 shows the distribution of jobs in Information Technology (IT) in England, Scotland and Wales in 2011.

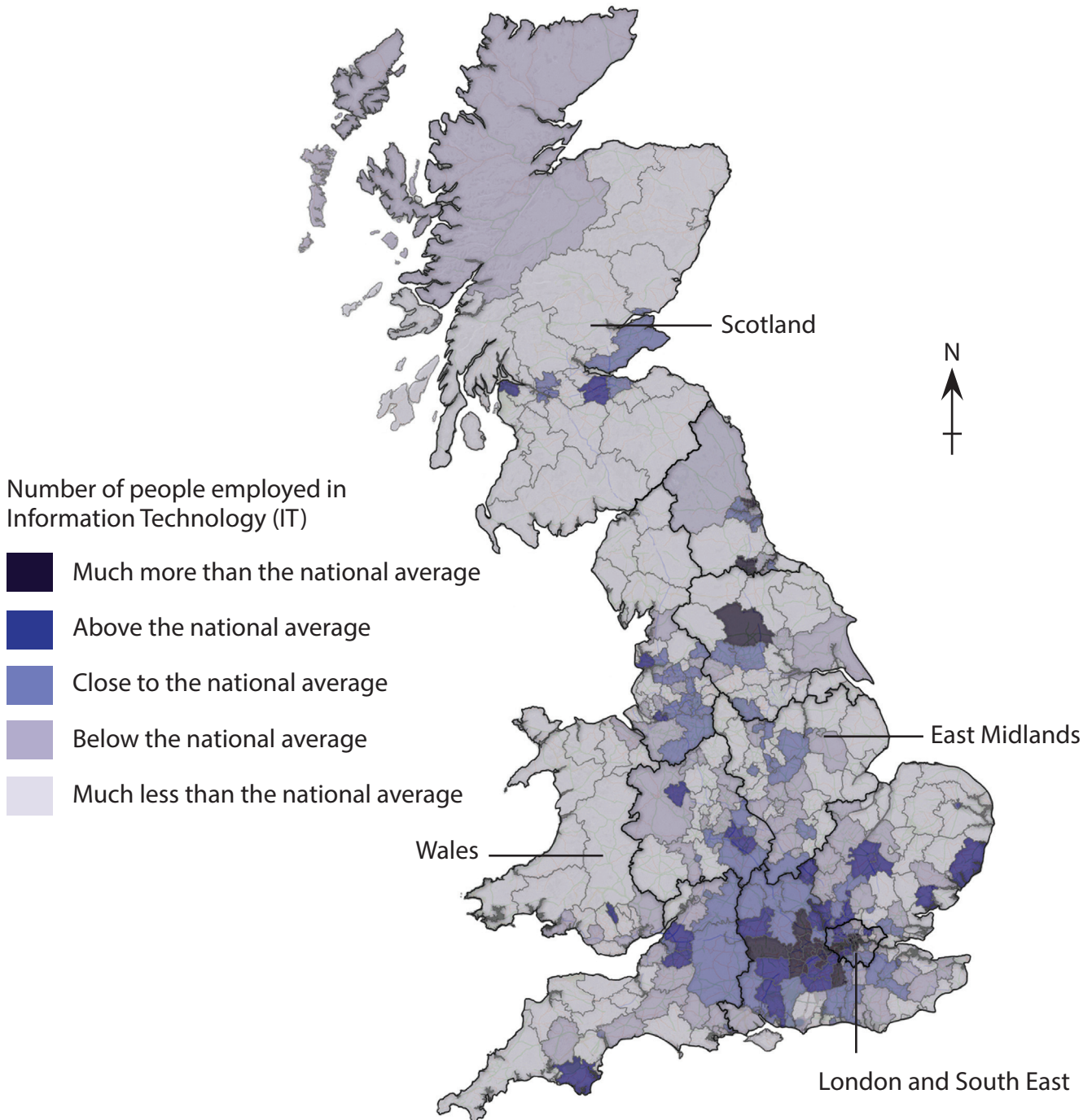


Figure 5



(a) Study Figure 5.

(i) Describe the distribution of jobs in Information Technology.

(2)

.....

.....

.....

.....

(ii) Outline **one** reason why some regions have more IT jobs than others.

(2)

.....

.....

.....

.....



BLANK PAGE
QUESTION 6 IS ON THE NEXT PAGE.

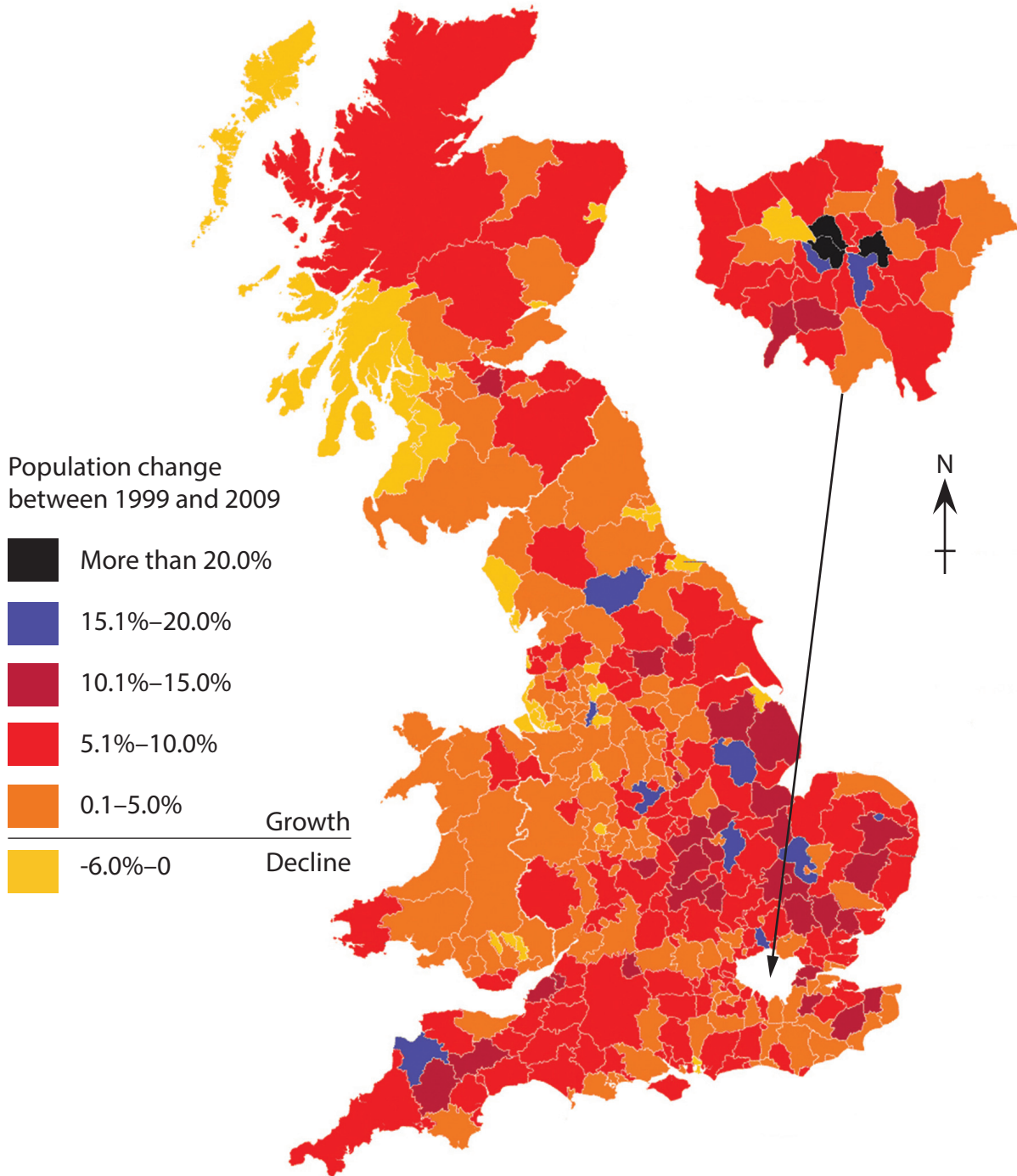


Topic 6: Changing Settlements in the UK

If you answer Question 6 put a cross in the box .

Spelling, punctuation and grammar will be assessed in 6*(b).

- 6 Figure 6 shows population change by local authority area in England, Scotland and Wales between 1999 and 2009.



(Source: Copyright Guardian News & Media Ltd 2010)

Figure 6



(a) Study Figure 6.

(i) Describe the pattern of population change.

(2)

.....

.....

.....

.....

(ii) Outline **one** reason why the population of some rural areas has declined.

(2)

.....

.....

.....

.....



BLANK PAGE
SECTION C STARTS ON THE NEXT PAGE.



SECTION C – LARGE-SCALE PEOPLE AND THE PLANET

Answer ONE question in this section.

Topic 7: The Challenges of an Urban World

If you answer Question 7 put a cross in the box .

Spelling, punctuation and grammar will be assessed in 7*(b).

- 7** Figure 7 shows the size of the urban population and the percentage who lived in slum housing for selected African countries in 2005.

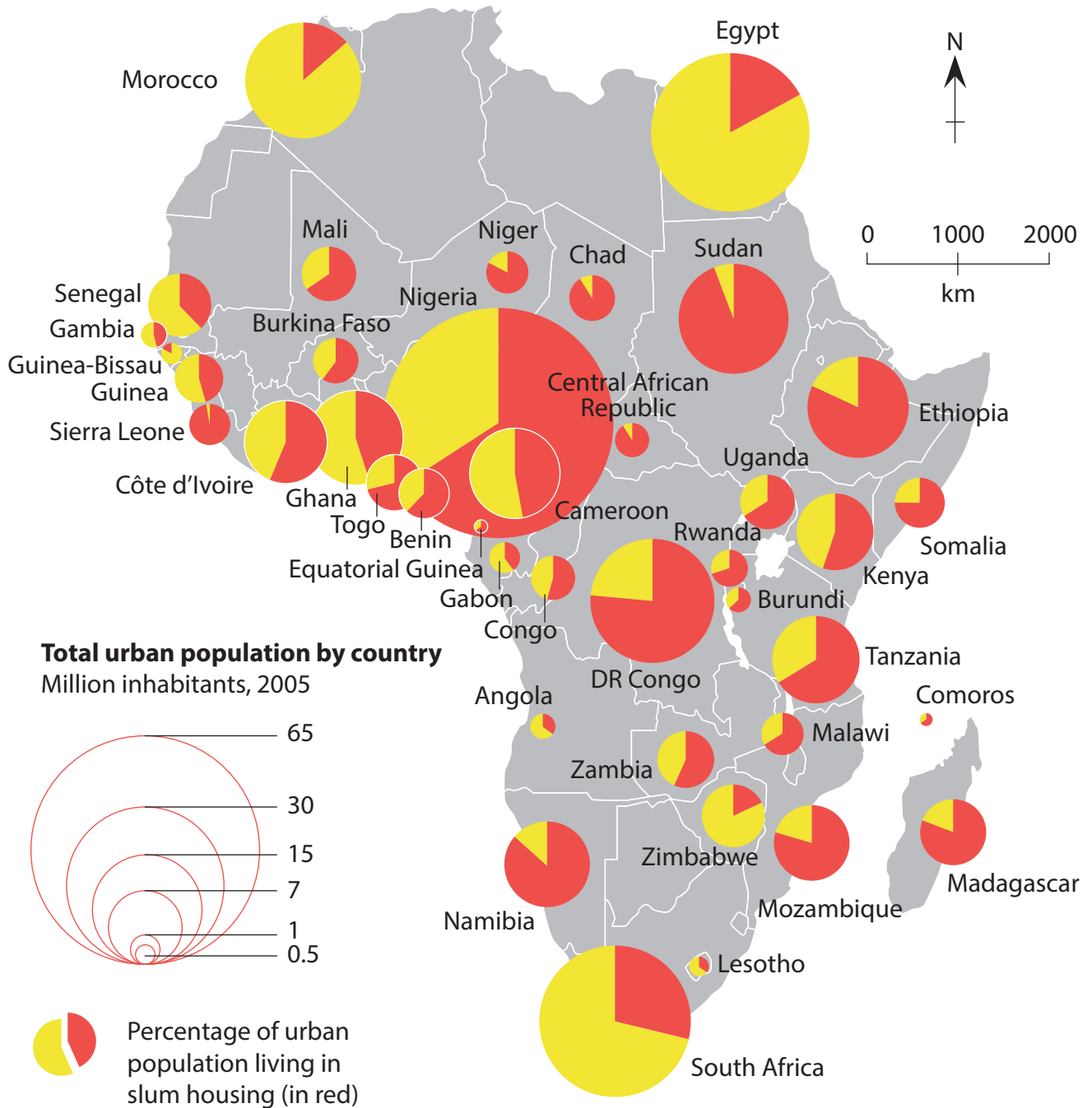


Figure 7



(a) Study Figure 7.

(i) Describe the general distribution of slum housing in Africa.

(2)

.....

.....

.....

.....

(ii) Suggest **one** reason why the percentage of the urban population living in slum housing varies across Africa.

(2)

.....

.....

.....

.....



BLANK PAGE
QUESTION 8 IS ON THE NEXT PAGE.



Topic 8: The Challenges of a Rural World

If you answer Question 8 put a cross in the box .

Spelling, punctuation and grammar will be assessed in 8*(b).

- 8 Figure 8 shows the percentage of United States farmers who had high-speed broadband connectivity in 2007.

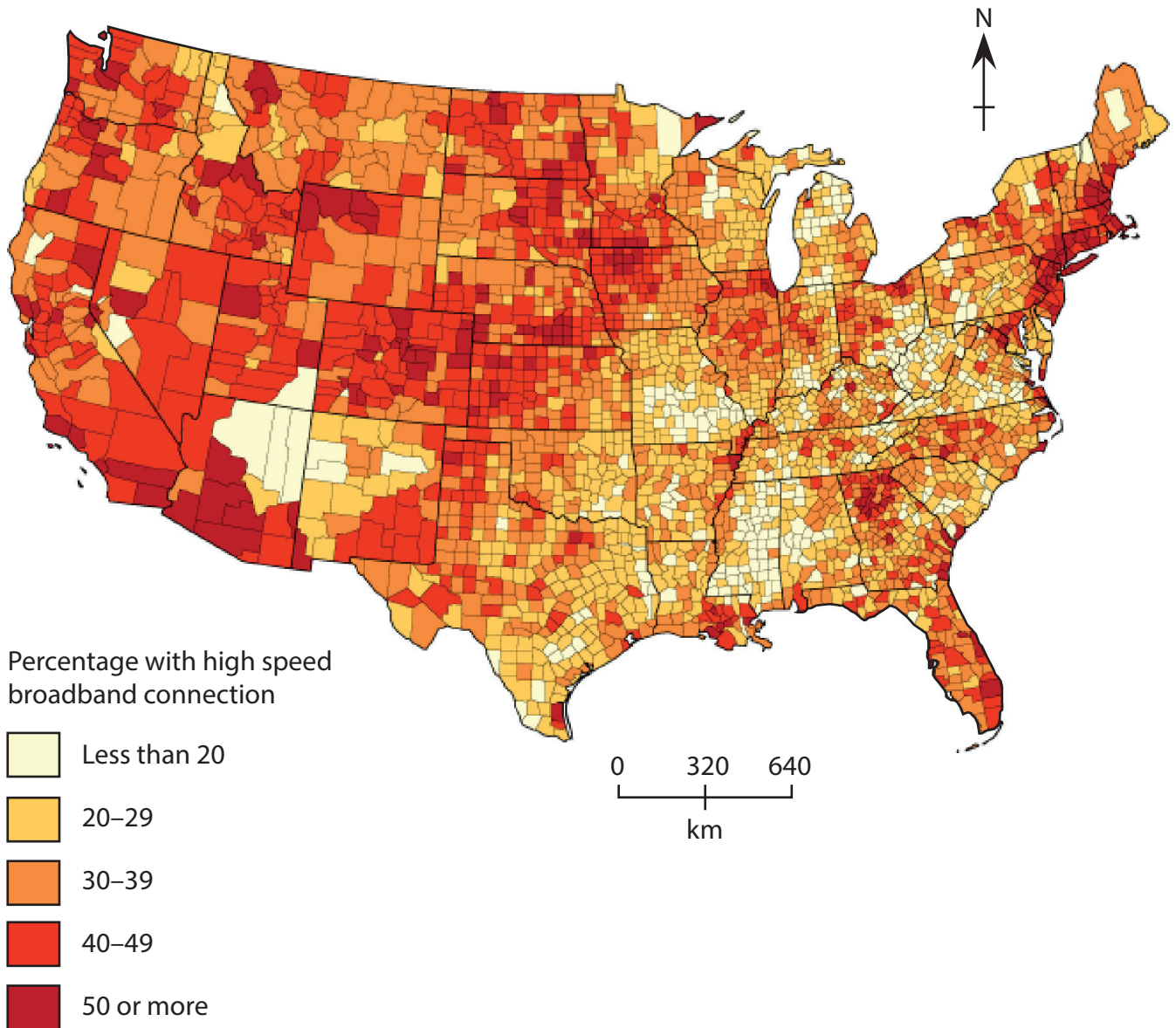


Figure 8



(a) Study Figure 8.

(i) Describe the pattern of farmers' access to high-speed broadband connectivity. (2)

.....

.....

.....

.....

(ii) Suggest **one** reason why rural isolation varies from place to place. (2)

.....

.....

.....

.....



